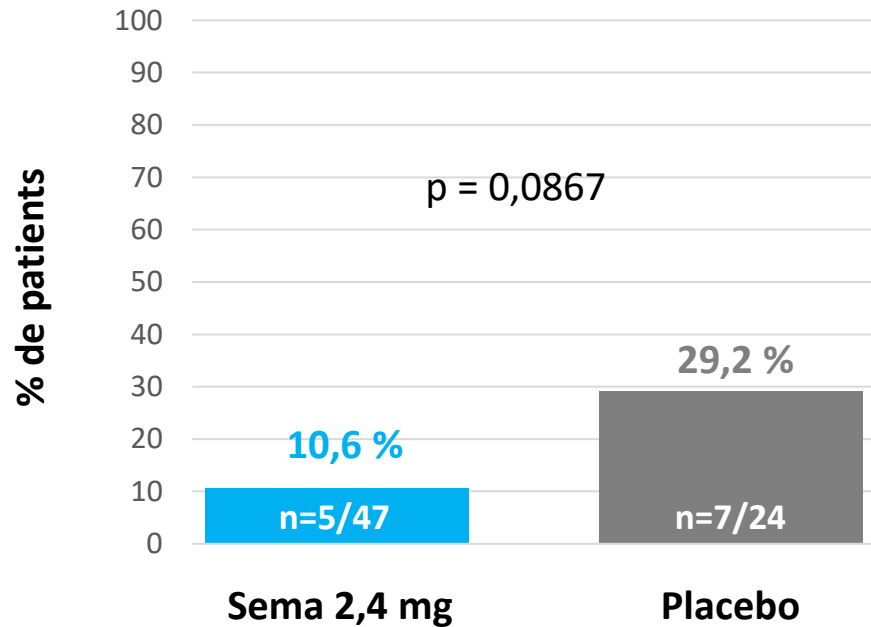


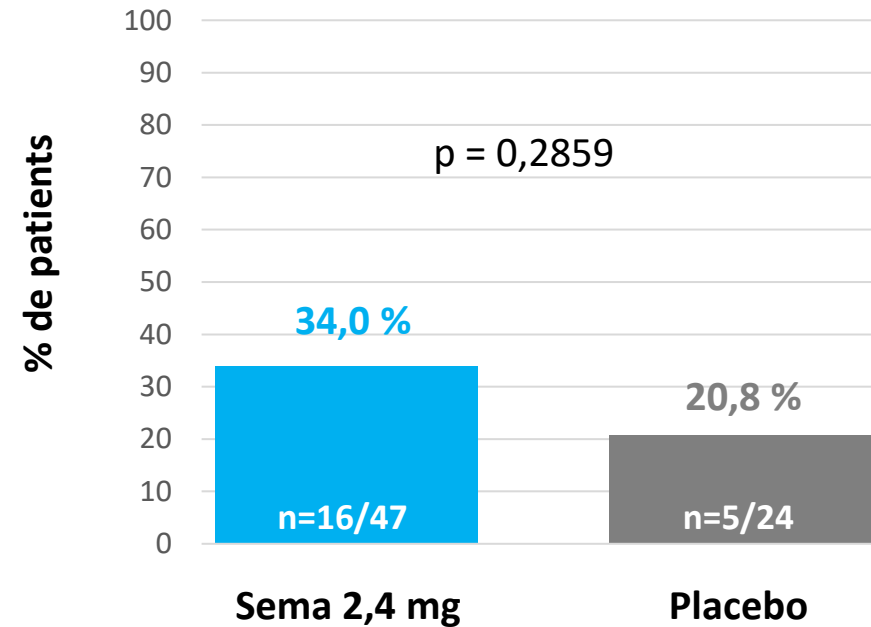


**Un intérêt du sémaglutide dans  
la cirrhose métabolique ?**

## Amélioration de la fibrose sans aggravation de la NASH

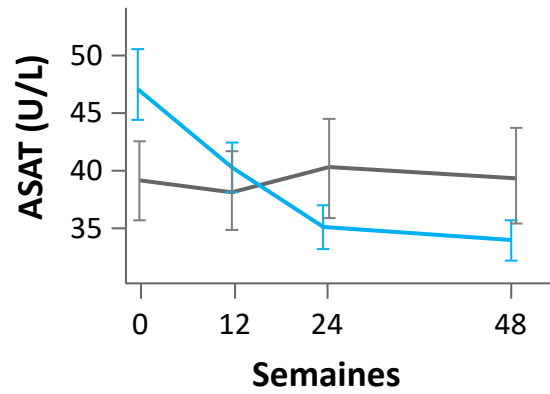


## Résolution de la NASH



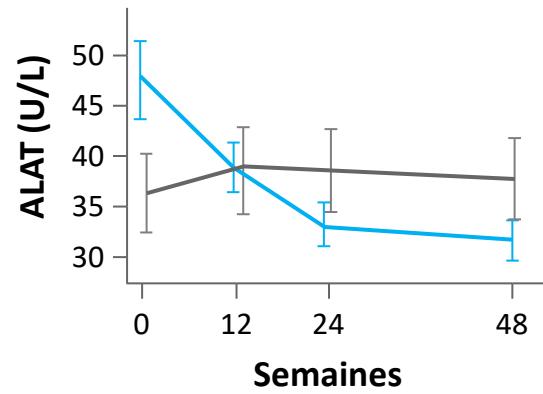
### ASAT

ETR = 0,77 (0,65-0,92)



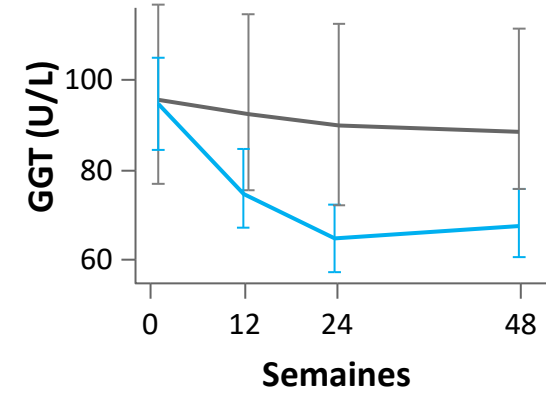
### ALAT

ETR = 0,76 (0,61-0,93)



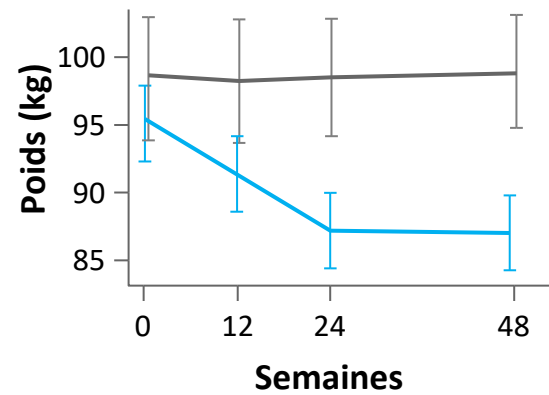
### GGT

ETR = 0,74 (0,62-0,88)



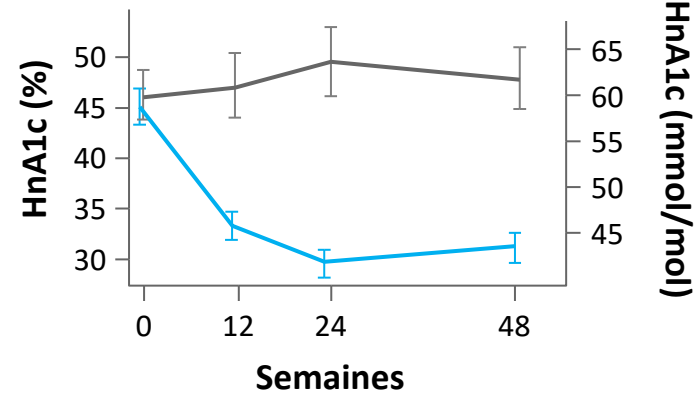
### Poids



ETD = -8,75 (-12,41 ; -5,09)



### HbA1c

ETD = -1,63 (-2,20 ; -1,06)



 Sema 2,4 mg
   
 Placebo